

INCUBATOR

FOR SUSTAINABLE CITIES

2022

INNOVATION | ACCELERATION | COLLABORATION

An aerial, top-down view of a futuristic city. The city is characterized by a dense grid of buildings with grey roofs, interspersed with large, irregularly shaped green spaces. These green spaces are filled with lush vegetation and are often surrounded by blue, grid-like structures that appear to be solar panels or water management systems. The overall aesthetic is clean, modern, and eco-friendly. The word 'ECOSYSTEM' is overlaid in the center of the image.

ECOSYSTEM

PEOPLE

Home > Arabian Business News > [World's First Incubator For Sustainable Cities Launched In Dubai](#)

SHARE



By Justin Harper

World's first incubator for sustainable cities launched in Dubai

The R&D programme will focus on developing new solutions for the next generation of sustainable cities across the world



Home | News

Urb launches Dubai-based urban tech incubator

News 20 Jul 2022

by SmartCitiesWorld news team



Urb wants to create an innovation hub centred around sustainable cities

The master planning, landscape and architectural services company, located in

TECHNOLOGY

PROJECTS: Dubai firm launches world's first incubator for sustainable cities

The incubator will serve as a R&D and knowledge transfer platform

swisstrade

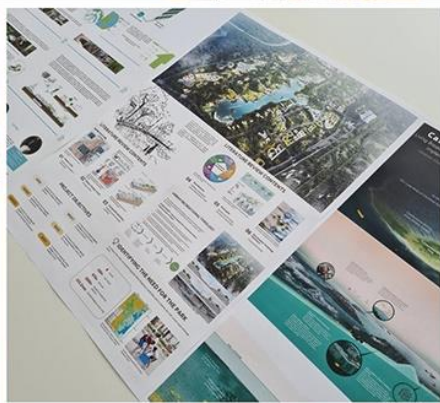
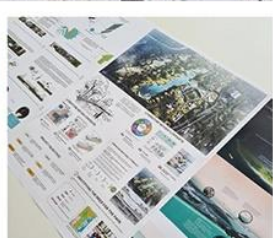
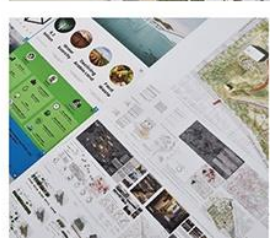
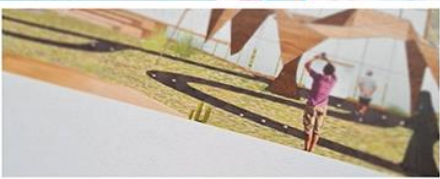
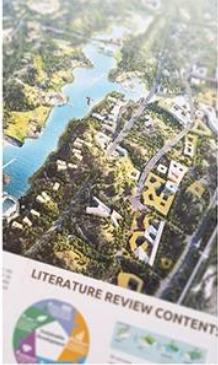
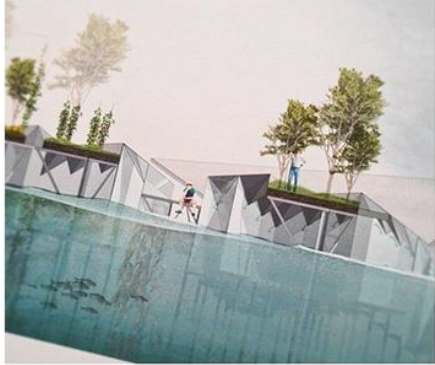


Dubai launches world's first incubator for sustainable cities

01 June 2022 14:56



Related partners







ADJACENT SHELL HALL

Reef ridges were design at a maximum 1:10 slope and incorporate artificial tide pools that retain water between tides, introducing intertidal habitat communities.



EMERGENT HABITAT AND LEE SIDE

Above HWL the breakerwater side slope and crest create opportunities for perching birds as well as haul out areas for harbor seals.



WIDENED BEACHES

Reversal of shoreline erosion and accretion of sediment over time will create wider beaches. These beaches will act as an energy buffer and allow for the establishment of dune grasses.



SHALLOW SLOPING INTERTIDAL HABITAT

Reef ridges were design at a maximum 1:10 slope and incorporate artificial tide pools that retain water between tides, introducing intertidal habitat communities.

STEEP SUBTIDAL HABITAT

Vertical and steeply inclined surfaces are placed within the subtidal zone and incorporate both bio-enhancing concrete armor units and stone armor units. The unit complexity, along with low sedimentation and light levels create prime opportunities for the colonization various aquatic organisms.



REEF STREETS CREATE COMPLEX HABITAT

These rocky protrusions and the spaces between are formed by a range of stone sizes and bio-enhancing concrete units. Materials are strategically placed to facilitate complex structured habitat for fish and other aquatic species, particularly juveniles.



OYSTER RESTORATION OPPORTUNITY

The Living Breakwaters create many opportunities for the restoration. Calmer waters on the lee side along with sustained water circulation within the reef streets are prime conditions for the setting and growth of oysters.

HORSESHOE CRAB SPAWNING HABITAT

Additional sand placed for shoreline restoration or sand that accretes over time will provide additional habitat needed for horseshoe crab spawning.





SHORTLIST



ARKITURRIA
URBANITARIAN
MANHAT
DUBAI'S NAIF URBAN REGENERATION
FLOOD RESILIENT PARKS
COASTAL GREEN INFRASTRUCTURE





INCUBATOR FOR SUSTAINABLE CITIES 2022

RUNNER UP

ARKITURRIA





INCUBATOR FOR SUSTAINABLE CITIES 2022

RUNNER UP

Urbanitarian is the world's leading community-based architectural and urban design firm. We use data-driven analysis of projects and website traffic for correlational mapping. It offers industry-informed marketing for projects of shared values.

Fulfilling its mission to create actionable plans by translating findings to operational insights through expert knowledge, Urbanitarian offers international value-led urban design consultancy practice operating at the forefront of today's planetary-scale challenges by filling the gap between architecture and planning through practicing equitable urban innovation and forward thinking across multiple design systems.



BUILD-UP VS. OPEN SPACE
The amount of build-up is measured against the amount of open space. The amount of open space is measured against the amount of build-up.



MIXED USE DEVELOPMENT
The amount of mixed use development is measured against the amount of open space. The amount of open space is measured against the amount of build-up.



WORKFORCE
The amount of workforce is measured against the amount of open space. The amount of open space is measured against the amount of build-up.



SOLAR ENERGY BY MONTH
The amount of solar energy by month is measured against the amount of open space. The amount of open space is measured against the amount of build-up.



DIVERSITY
The amount of diversity is measured against the amount of open space. The amount of open space is measured against the amount of build-up.



ECO, NEURO, AGE, ABILITY
Ecological oil sea to come treat ecosystems as complementary mechanisms necessary for mutual survival. From nature to age groups to people of neurodiverse backgrounds.



CONCEPT
BUDGET
RESULTS

COMMUNICATION
DEVELOPMENT

URBANITARIAN



INCUBATOR FOR SUSTAINABLE CITIES 2022

WINNER

MANHAT





URE